



STAYBILLS SAFETY ACCESS SYSTEMS

**SAFE, ROBUST, EASY TO USE AND
ECONOMICAL GUARDRAIL SYSTEM**



OUR CUSTOMERS SAY STAYBILLS IS THE BEST LOW LEVEL ACCESS SYSTEM

AVAILABLE IN THREE SIZES

Small (745-1275mm)

Medium (1050-1600mm)

& Large (1575-2230mm)

INVENTED BY THE USERS TO BE SIMPLE & FAST TO USE BUT ALSO FULLY SAFE

FULL COMPETENCY TRAINING AVAILABLE FOR ALL ORDERS

FLEXIBLE, LOAD BEARING & ROBUST GUARDRAIL SYSTEM



3 - SIZES: Small (745-1275mm) Medium (1050-1600mm) and Large (1575-2230mm)

- 1 **Single Staybill** > a pre-fitted spacer bar and stabiliser provides lateral strength and resistance to toppling over. Double Staybill (Red Lugs) use 2-stabilisers which are used for stop ends or returns. Our 40mm board overlap facility is available at lowest and highest positions.
- 2 **Post** > have a hook from which our Panels are hung – insert into the stabiliser with the hook facing your boards/platform. Ensure the post knuckles are level with your platform height if pinned to synchronise the height. The optional C-Hooks can be used to restrain the panels against the Posts and to allow a single post to hang a second panel and can also be used to hang further panels where squints, corners or splayed shapes are required.
- 3 **Guardrail Panels** > Solid and Hinged versions simply hangs from the Posts. All panels provide 1100mm high handrail, full 225mm toeboard and full steel 50 x 50mm mesh protection that safely protect people and objects from falling. Solid panels are placed concave facing your platform and usually alternate with the Hinged panels – these allow loading of materials/tools whilst maintaining the integrity of the guardrail protection.
- 4 **Ladder Restraint** > inserts into the Post tops and provides an integral ladder stability device (LSD) to which you can lash your ladder together with a safety guard rail to protect the point of access and egress. We recommend you suitably lash your ladders prior to use.

COMPONENT WEIGHTS

Single Staybill:	Small: 13kgs	Medium: 14.5kgs	Large: 28kgs
Double Staybill:	Small: 15kgs	Medium: 17kgs	Large: 34kgs
Large Post: 4.5kgs	Small/ Medium Posts: 3kgs		
Solid Panels: 8kgs	Hinged Panels: 7kgs	Ladder Restraint: 4.5kgs	H-Frame: 6.5 kgs

METAL ONLY WEIGHT PER METRE

Small: 24kgs/metre run	Medium: 26kgs/metre run	Large: 43kgs/metre run
------------------------	-------------------------	------------------------

TECHNICAL SPECIFICATIONS



Vertical Load Tested to BS1139: Part 4



Small Staybills



Medium Staybills



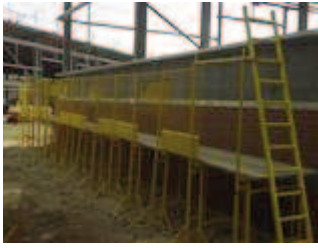
Large Staybills

Horizontal Load/Topple Over Tested to BS EN 12811



Key Points:

- **Safe Working Load of 450kgs per Staybill unit**
NB: Usually 1x1.0Te Pack of masonry & 1x 0.3m³ Mortar Tub per 13' or 3.9m Platform length
- **Provides Class A Protection to BS EN 13374 (flat surfaces)**
- **Fully compliant to the WAHR (Updated 2007) – BUT ALSO during erection and dismantling**
- **Enhanced design using Spacer Bar provides added load capacity with lateral stability**
- **No tools or fasteners or fixings required as NO site assembly needed giving Low Cost In Use**
- **No harnesses or lanyards required as all Staybills can be safely erected or dismantled from the Ground**
- **Any working platform length can be provided – whether in scaffold board modules or bespoke length**
- **Handrail height of 1100mm (150mm higher than current legislation)**
- **Working platform heights from 745-2230mm**
- **Works on well rolled/ compacted sub-base or hardcore un-even ground**
- **Spacer bar “polices” setting out until last bay where “shunt” detail allows full flexibility**
- **Staybills puts the User in Control with no delays or waiting for other access trades**



Work at Height (Amendment) Regulations 2007 legislates those who work at height or who provide instruction or leadership to one or more people engaged in working at height in Great Britain. As part of the Regulations, duty holders must ensure:

- all work at height is properly planned and organised;
- those involved in work at height are competent;
- the risks from work at height are assessed and appropriate work equipment is selected and used;
- the risks from fragile surfaces are properly controlled; and
- equipment for work at height is properly inspected and maintained.

Hierarchy for Duty Holders to manage and select the Right Equipment for work at height who must:

1. Avoid work at height where they can; 2. Use work equipment to prevent falls where they cannot avoid working at height; and 3. where they cannot eliminate the risk of a fall, use equipment or other measures to minimise the distance and consequences of a fall should one occur. To use **SUITABLE** equipment to avoid **FALLS!**

Staybills Hire Limited Co. Reg: 6220535 VAT Reg: 101 3289 60

RING 01925 595001

John 07906 694303 or Nigel 07855 454903 for a free no obligation quote

Web-site: www.staybills.com

Voicemail: 0700 585 0156

E-mail: enquiries@staybills.com

Fax: 0700 585 0157